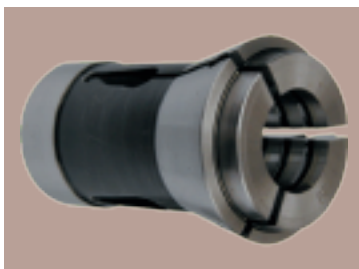


1260-4001... 4015, 1260-4103... 4125 B-S 卡头
1260-4001...4015,1260-4103...4125 21# B&S Taper Round Collets



Stock No	Size	Stock No	Size
1260-4001	1/8"	1260-4103	3mm
1260-4002	3/16"	1260-4105	5mm
1260-4003	1/4"	1260-4106	6mm
1260-4004	5/16"	1260-4108	8mm
1260-4005	3/8"	1260-4110	10mm
1260-4006	7/16"	1260-4111	11mm
1260-4007	1/2"	1260-4113	13mm
1260-4008	9/16"	1260-4114	14mm
1260-4009	5/8"	1260-4116	16mm
1260-4010	11/16"	1260-4117	17mm
1260-4011	3/4"	1260-4118	18mm
1260-4012	13/16"	1260-4120	20mm
1260-4013	7/8"	1260-4122	22mm
1260-4014	15/16"	1260-4124	24mm
1260-4015	1"	1260-4125	25mm

HITECH (Qingdao)
ENTERPRISES INC