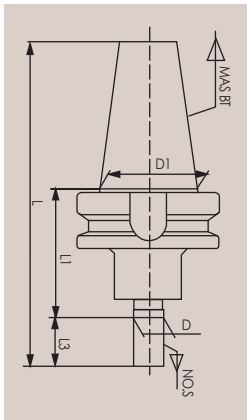


BT taper Drill Chuck Arbors



Stock No.	BT-No.S-L1	L2(mm)	L(mm)	D(mm)	D1(mm)	Drawbar Thread	Weight(Kg)
1168-3001	BT30-J1-45	16.669	110	9.754	31.75	M12	0.60
1168-3002	BT30-J2-45	22.225	115.6	14.199	31.75	M12	0.70
1168-3003	BT30-J2S-45	19.05	112.4	13.94	31.75	M12	0.70
1168-3004	BT30-J3-45	30.956	124.4	20.599	31.75	M12	0.80
1168-3005	BT30-J4-45	42.069	135.4	28.55	31.75	M12	0.85
1168-3006	BT30-J5-45	47.625	141	35.89	31.75	M12	0.90
1168-3007	BT30-J6-45	25.4	118.8	17.17	31.75	M12	0.75
1168-3008	BT30-J33-40	25.4	113.8	15.85	31.75	M12	0.75
1168-3009	BT30-J33-45	25.4	118.8	15.85	31.75	M12	0.75
1168-3010	BT30-B10-45	14.5	107.9	10.094	31.75	M12	0.60
1168-3011	BT30-B12-45	18.5	111.9	12.065	31.75	M12	0.60
1168-3012	BT30-B16-45	24	117.4	15.733	31.75	M12	0.70
1168-3013	BT30-B18-45	32	125.4	17.78	31.75	M12	0.82
1168-4001	BT40-J1-45	16.669	127.1	9.754	44.45	M16	1.16
1168-4002	BT40-J2-45	22.225	132.6	14.199	44.45	M16	1.25
1168-4003	BT40-J2S-45	19.05	129.4	13.94	44.45	M16	1.20
1168-4004	BT40-J3-45	30.956	141.4	20.599	44.45	M16	1.45
1168-4005	BT40-J4-45	42.069	152.5	28.55	44.45	M16	1.55
1168-4006	BT40-J5-45	47.625	158	35.89	44.45	M16	1.60
1168-4007	BT40-J6-45	25.4	135.8	17.17	44.45	M16	1.30
1168-4008	BT40-J33-45	25.4	135.8	15.85	44.45	M16	1.30
1168-4009	BT40-B10-45	14.5	124.9	10.094	44.45	M16	1.40
1168-4010	BT40-B10-120	14.5	199.9	10.094	44.45	M16	1.76
1168-4011	BT40-B12-45	18.5	128.9	12.065	44.45	M16	1.34
1168-4012	BT40-B16-32	24	121.4	15.733	44.45	M16	1.40
1168-4013	BT40-B16-45	24	134.4	15.733	44.45	M16	1.45
1168-4014	BT40-B16-75	24	164.4	15.733	44.45	M16	1.55
1168-4015	BT40-B16-90	24	179.4	15.733	44.45	M16	1.40
1168-4016	BT40-B18-45	32	142.4	17.78	44.45	M16	1.70
1168-4017	BT40-B18-75	32	172.4	17.78	44.45	M16	1.76
1168-4501	BT45-B16-90	24	196.8	15.733	51.75	M20	2.30
1168-4502	BT45-B16-100	24	206.8	15.733	51.75	M20	2.40
1168-5001	BT50-J1-45	16.669	163.5	9.754	69.85	M24	3.60
1168-5002	BT50-J2-45	22.225	169	14.199	69.85	M24	3.95
1168-5003	BT50-J2S-45	19.05	165.9	13.94	69.85	M24	3.90
1168-5004	BT50-J3-45	30.956	177.8	20.599	69.85	M24	3.70
1168-5005	BT50-J4-45	42.069	188.9	28.55	69.85	M24	3.75
1168-5006	BT50-J5-45	47.625	194.4	35.89	69.85	M24	3.80
1168-5007	BT50-J6-45	25.4	172.2	17.17	69.85	M24	4.00
1168-5008	BT50-J33-45	25.4	172.2	15.85	69.85	M24	4.00
1168-5009	BT50-B10-45	14.5	161.3	10.094	69.85	M24	3.60
1168-5010	BT50-B10-100	14.5	216.3	10.094	69.85	M24	3.80
1168-5011	BT50-B12-45	18.5	165.3	12.065	69.85	M24	3.60
1168-5012	BT50-B16-45	24	170.8	15.733	69.85	M24	3.65
1168-5013	BT50-B16-60	24	185.8	15.733	69.85	M24	3.70
1168-5014	BT50-B16-75	24	200.8	15.733	69.85	M24	3.74
1168-5015	BT50-B16-90	24	215.8	15.733	69.85	M24	3.78
1168-5016	BT50-B18-45	32	178.8	17.78	69.85	M24	3.70

Features:

Suitable for CNC RPM≥12000 RPM≥20000 balance toolholders are available D(Nose Dia)mm D1(mm)